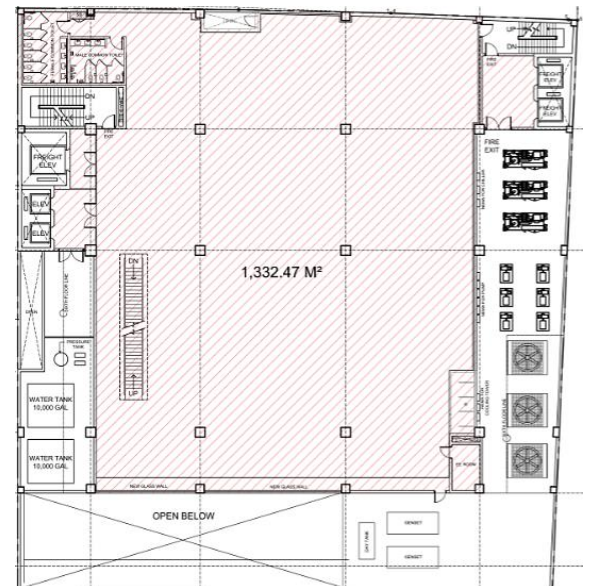


JACKMAN PLAZA I.T. CENTER

GENERAL INFORMATION

Developer	Philippines Onwards Realty Corporation
Completion Date	Completion - 2011 Renovation - October 2016
Gross Leasable Area	15,322.25 square meters
Typical Floor Plate	1,700.00 square meters
Available Space	3F - 1,926.25 square meters 4F - 2,147.00 square meters 5F - 1,440.43 square meters 6F - 1,589.88 square meters [Total - 7,103.56 square meters]
Efficiency	85%
Floor Density Ratio	1:5.5
Number of Floors	6
Certification	PEZA Certified
Parking Slots	42
Air-Conditioning	Variable Refrigerant Flow Centralized chilled water system (3F)
Backup Power	100%
Elevators	2 passenger lifts + 1 service lift
Telco Providers	Globe and PLDT
Ceiling Height	3.3 meters
Handover Condition	Warm Shell



The material and information contained herein are intended only as a guide in helping the recipient hereof to make a decision on whether or not to enter into the appropriate transaction with respect to the Property described herein. The recipient hereof is expected to conduct its own review and assessment of the Property and its suitability for the recipient's intended purpose, including consultation with financial and legal advisers and counsel, for a thorough understanding of all considerations which may be relevant to the recipient's decision to enter into a transaction with respect to the Property described herein. Nothing contained herein may be taken as a representation, warranty, or offer on the part of the Property owner or its representative upon which a binding agreement with respect to the Property may be based. No representation or warranty is made with respect to the accuracy, completeness, or relevance of the material and information contained herein, and Leechiu Property Consultants, Inc., its stockholders, directors, officers, employees, representatives, and agents assume no liability arising from or in relation to the use or reliance of or by any person on the material and information contained herein.