

LEECHIU
PROPERTY CONSULTANTS

PROPERTY FOR LEASE

**NEXGEN
TOWER**

EDSA Extension
Pasay City

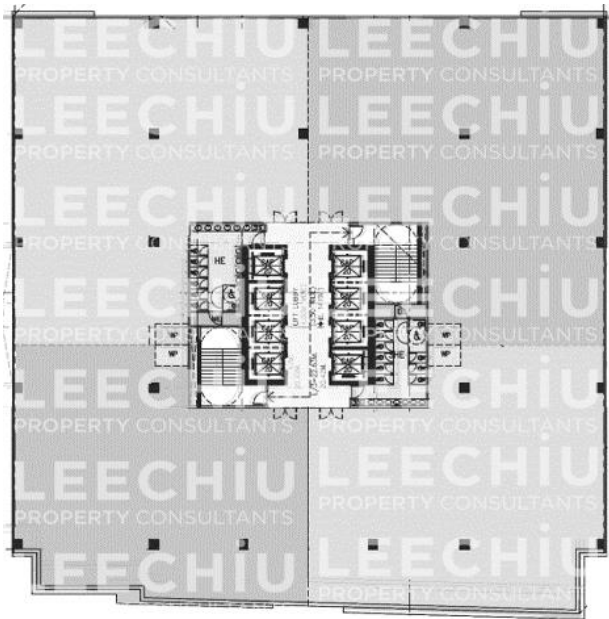
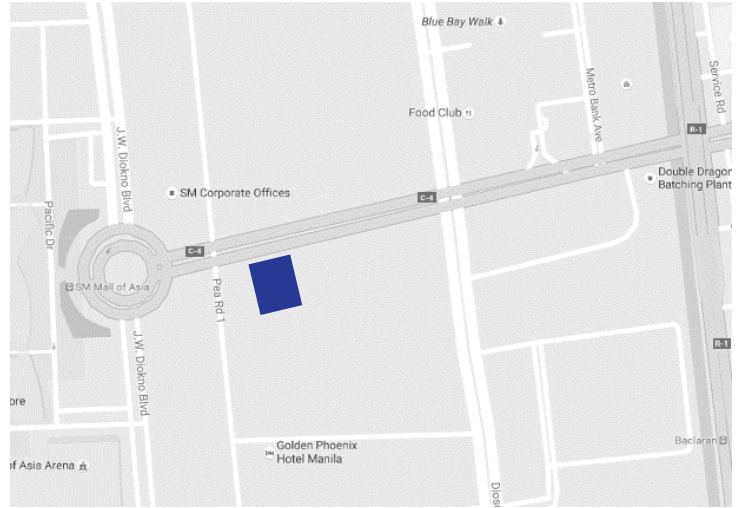


NEXGEN TOWER

NEXGEN TOWER

GENERAL INFORMATION

Developer	Millenium Properties and Brokerage Inc.
Completion Date	4Q 2017
Gross Leasable Area	19,756 square meters
Typical Floor Plate	Approx. 2,300 square meters
Efficiency	88%
Number of Floors	11 (4F - 11F)
Office Floors	4F to 11F
Certifications	Under Application for PEZA
Floor Density Ratio	1:5
Parking Levels	2 floors (Podium)
Air-Conditioning	Variable Refrigerant Flow (VRF)
Backup Power	100%
Elevators	7 Passenger Lifts 1 Service Lift
Telco Provider	Globe, PLDT
Ceiling Height	2.7 meters
Handover Condition	Warm Shell



The material and information contained herein are intended only as a guide in helping the recipient hereof to make a decision on whether or not to enter into the appropriate transaction with respect to the Property described herein. The recipient hereof is expected to conduct its own review and assessment of the Property and its suitability for the recipient's intended purpose, including consultation with financial and legal advisers and counsel, for a thorough understanding of all considerations which may be relevant to the recipient's decision to enter into a transaction with respect to the Property described herein. Nothing contained herein may be taken as a representation, warranty, or offer on the part of the Property owner or its representative upon which a binding agreement with respect to the Property may be based. No representation or warranty is made with respect to the accuracy, completeness, or relevance of the material and information contained herein, and Leechiu Property Consultants, Inc., its stockholders, directors, officers, employees, representatives, and agents assume no liability arising from or in relation to the use or reliance of or by any person on the material and information contained herein.

LEECHIU
PROPERTY CONSULTANTS

**EXCLUSIVE
AGENT**

www.leechiu.com

PHILLIP ANONUEVO

☎ 0917.538.0115

✉ phillip.anonuevo@leechiu.com

JOY LOPEZ

☎ 0917.832.5949

✉ joy.lopez@leechiu.com

MIGUEL MANIPOL

☎ 0917.898.8830

✉ miguel.manipol@leechiu.com