

LEECHIU
PROPERTY CONSULTANTS

PROPERTY FOR LEASE

**MENARCO
TOWER**

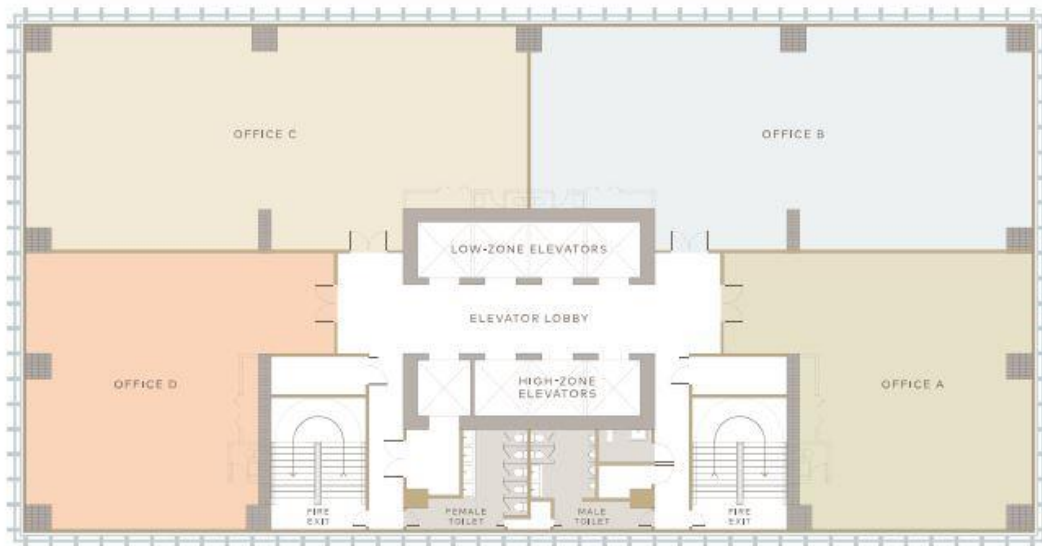
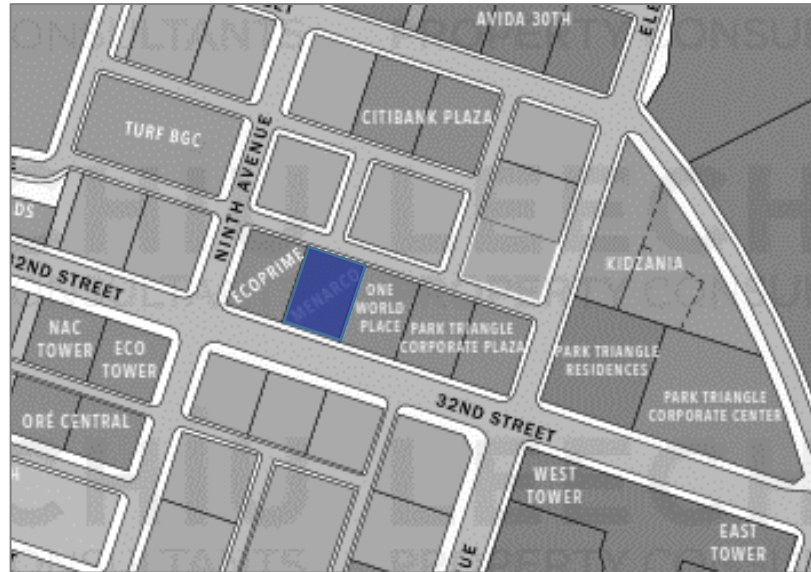
32nd Street,
Bonifacio Global
City



MENARCO TOWER

TECHNICAL INFORMATION

Developer	Menarco Development Corporation
Completion Date	1Q 2017
Gross Leasable Area	25,450 square meters
Typical Floor Plate	1,225 square meters
Efficiency	80%
No. of Floors	29
Certifications	For PEZA Application Pre-certified LEED Gold
Parking Levels	B1 to B4, 2 nd to 7 th floors
Air-conditioning	Variable Refrigerant Flow (VRF)
Back-up Power	100%
Elevators	8
Telco Provider	Globe, Eastern, PLDT
Ceiling Height	2.8 meters
Handover Condition	Bare Shell



The material and information contained herein are intended only as a guide in helping the recipient hereof to make a decision on whether or not to enter into the appropriate transaction with respect to the Property described herein. The recipient hereof is expected to conduct its own review and assessment of the Property and its suitability for the recipient's intended purpose, including consultation with financial and legal advisers and counsel, for a thorough understanding of all considerations which may be relevant to the recipient's decision to enter into a transaction with respect to the Property described herein. Nothing contained herein may be taken as a representation, warranty, or offer on the part of the Property owner or its representative upon which a binding agreement with respect to the Property may be based. No representation or warranty is made with respect to the accuracy, completeness, or relevance of the material and information contained herein, and Leechiu Property Consultants, Inc., its stockholders, directors, officers, employees, representatives, and agents assume no liability arising from or in relation to the use or reliance of or by any person on the material and information contained herein.