

PROPERTY FOR LEASE

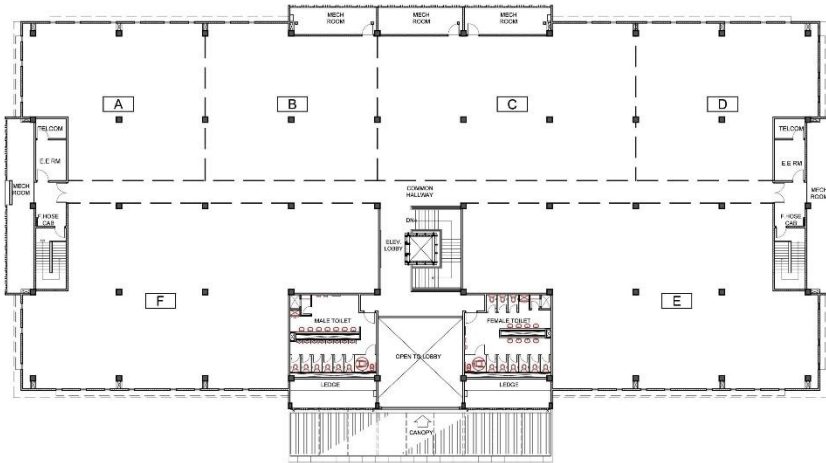
SUNTECH iPark

Lancaster New City
Advincula Avenue
Imus, Cavite

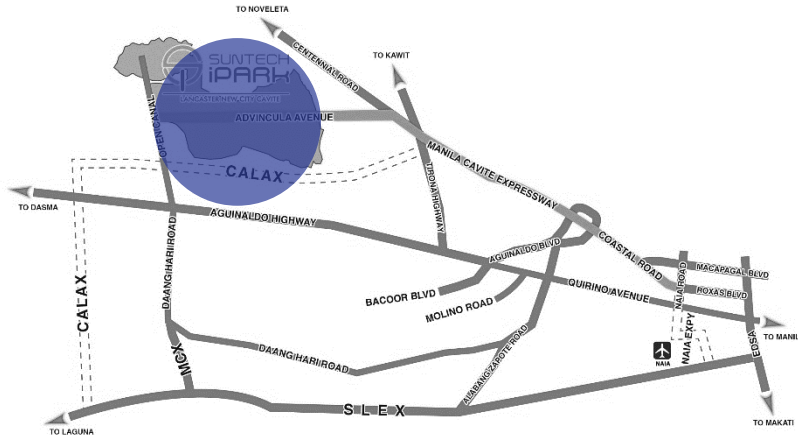


SUNTECH iPARK

TECHNICAL INFORMATION



Developer	Pro-friends
Completion Date	Available now
Gross Leasable Area	5,600 square meters
Typical Floor Plate	2,800 square meters
Efficiency	Approximately 86%
No. of Floors	2
Certifications	PEZA
Floor Density Ratio	1 : 5
Parking Level	Open Parking
Air-conditioning	Variable Refrigerant Flow
Back-up Power	100%
Elevators	1
Telco Provider	Globe, PLDT, Eastern Telecom
Ceiling Height	2.7
Handover Condition	Bare Shell



The material and information contained herein are intended only as a guide in helping the recipient hereof to make a decision on whether or not to enter into the appropriate transaction with respect to the Property described herein. The recipient hereof is expected to conduct its own review and assessment of the Property and its suitability for the recipient's intended purpose, including consultation with financial and legal advisers and counsel, for a thorough understanding of all considerations which may be relevant to the recipient's decision to enter into a transaction with respect to the Property described herein. Nothing contained herein may be taken as a representation, warranty, or offer on the part of the Property owner or its representative upon which a binding agreement with respect to the Property may be based. No representation or warranty is made with respect to the accuracy, completeness, or relevance of the material and information contained herein, and Leechiu Property Consultants, Inc., its stockholders, directors, officers, employees, representatives, and agents assume no liability arising from or in relation to the use or reliance of or by any person on the material and information contained herein.