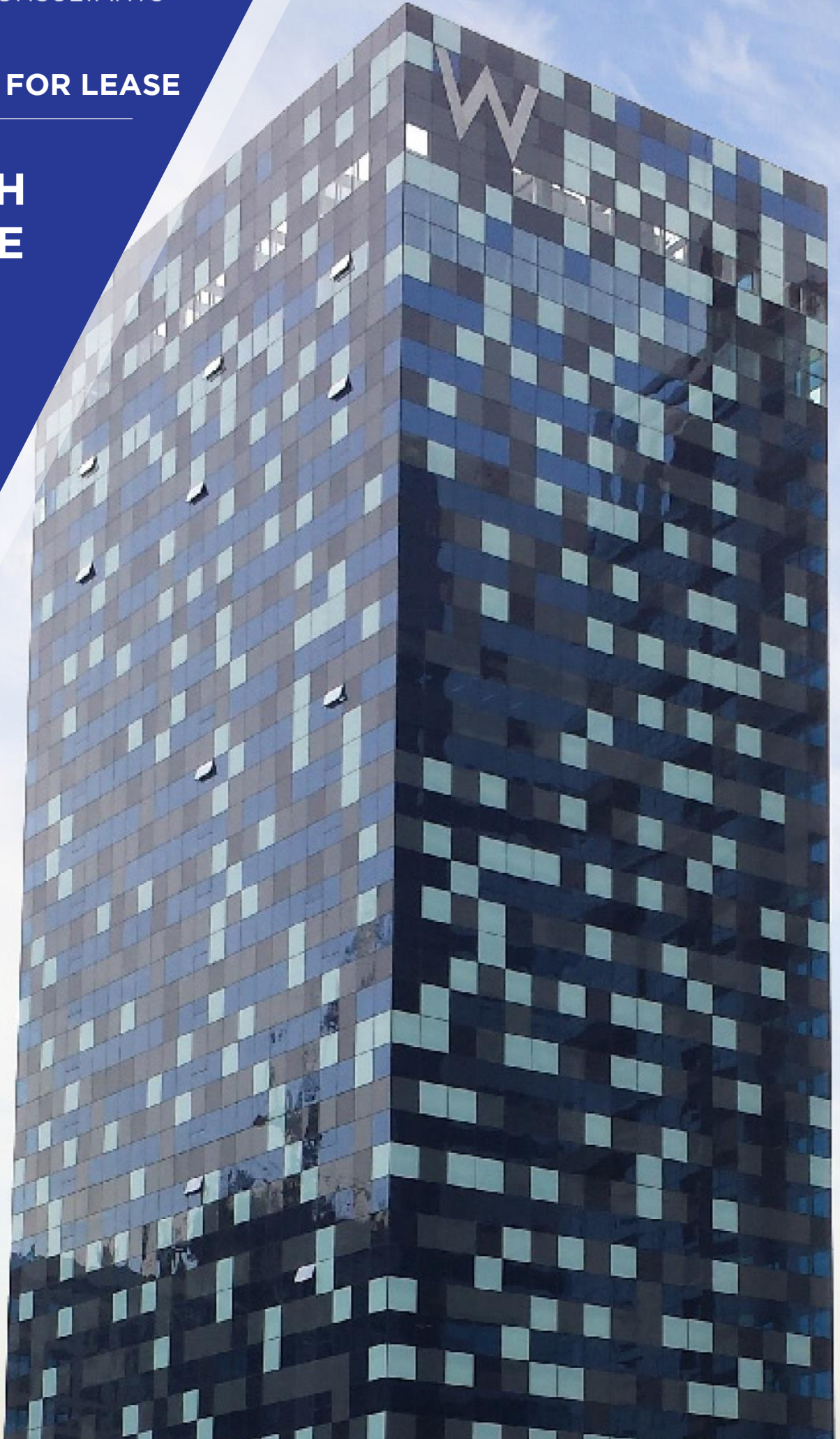


LEECHIU
PROPERTY CONSULTANTS

PROPERTY FOR LEASE

W FIFTH AVENUE

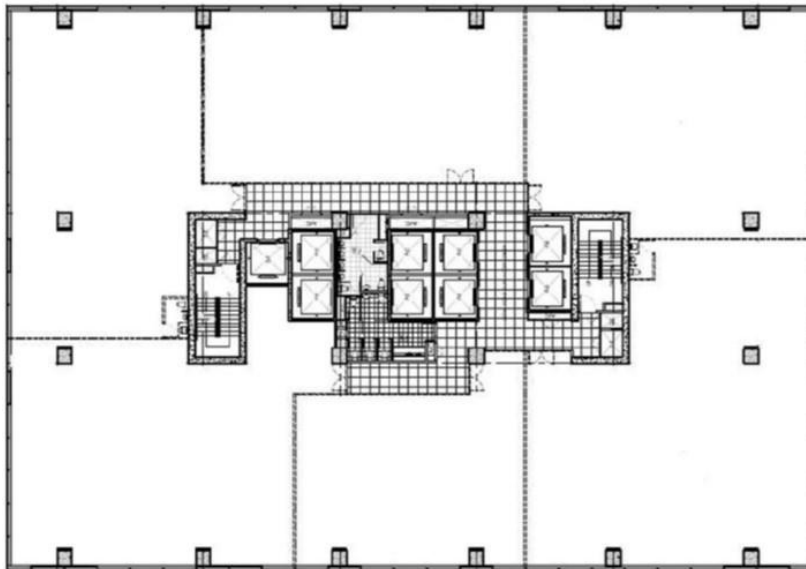
Fifth Avenue,
Bonifacio
Global City



W FIFTH AVENUE

TECHNICAL INFORMATION

Developer	The W Group
Completion Date	2013
Gross Leasable Area	33,295 square meters
Typical Floor Plate	1,638 square meters - Low Zone 1,670.87 square meters - High Zone
Efficiency	88%
No. of Floors	26
Certifications	PEZA Certified
Parking Levels	7 floors
Air-conditioning	Variable Refrigerant Flow (VRF)
Back-up Power	100%
Elevators	11
Telco Provider	Multiple Providers
Ceiling Height	3 meters (Floor to Ceiling)
Handover Condition	Warm Shell



The material and information contained herein are intended only as a guide in helping the recipient hereof to make a decision on whether or not to enter into the appropriate transaction with respect to the Property described herein. The recipient hereof is expected to conduct its own review and assessment of the Property and its suitability for the recipient's intended purpose, including consultation with financial and legal advisers and counsel, for a thorough understanding of all considerations which may be relevant to the recipient's decision to enter into a transaction with respect to the Property described herein. Nothing contained herein may be taken as a representation, warranty, or offer on the part of the Property owner or its representative upon which a binding agreement with respect to the Property may be based. No representation or warranty is made with respect to the accuracy, completeness, or relevance of the material and information contained herein, and Leechiu Property Consultants, Inc., its stockholders, directors, officers, employees, representatives, and agents assume no liability arising from or in relation to the use or reliance of or by any person on the material and information contained herein.