



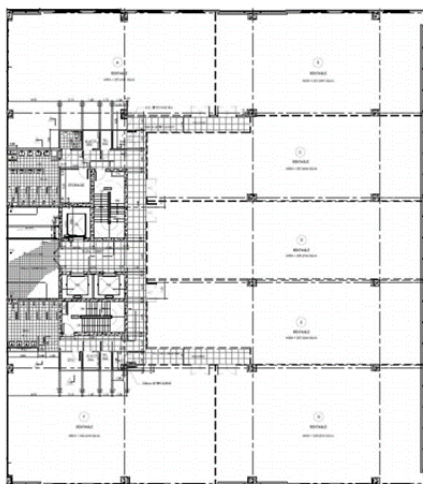
**LEECHIU**  
PROPERTY CONSULTANTS

**PROPERTY FOR LEASE**

**W OFFICE AT  
HIGH STREET**

Eleventh Avenue corner 28<sup>th</sup> Street  
Bonifacio Global City

# W OFFICE AT HIGHSTREET



## GENERAL INFORMATION

<b>Developer</b>	The W Group
<b>Completion Date</b>	1Q 2011
<b>Gross Leasable Area</b>	10,239.60 square meters
<b>Typical Floor Plate</b>	1,817 square meters
<b>Efficiency</b>	85%
<b>Number of Floors</b>	6
<b>Parking Levels</b>	1 floor
<b>Air-Conditioning</b>	Variable Refrigerant Flow
<b>Bac-up Power</b>	100%
<b>Elevators</b>	2 Passenger 1 Service
<b>Telco Provider</b>	Globe, PLDT
<b>Ceiling Height</b>	2.75 meters
<b>Handover Condition</b>	Warm Shell

The material and information contained herein are intended only as a guide in helping the recipient hereof to make a decision on whether or not to enter into the appropriate transaction with respect to the Property described herein. The recipient hereof is expected to conduct its own review and assessment of the Property and its suitability for the recipient's intended purpose, including consultation with financial and legal advisers and counsel, for a thorough understanding of all considerations which may be relevant to the recipient's decision to enter into a transaction with respect to the Property described herein. Nothing contained herein may be taken as a representation, warranty, or offer on the part of the Property owner or its representative upon which a binding agreement with respect to the Property may be based. No representation or warranty is made with respect to the accuracy, completeness, or relevance of the material and information contained herein, and Leechiu Property Consultants, Inc., its stockholders, directors, officers, employees, representatives, and agents assume no liability arising from or in relation to the use or reliance of or by any person on the material and information contained herein.