

PROPERTY FOR LEASE

W CITYCENTER

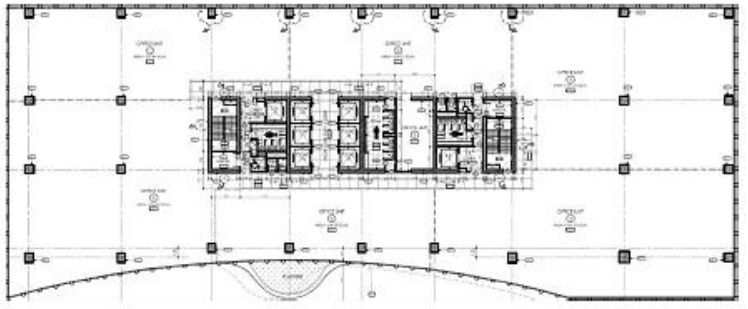
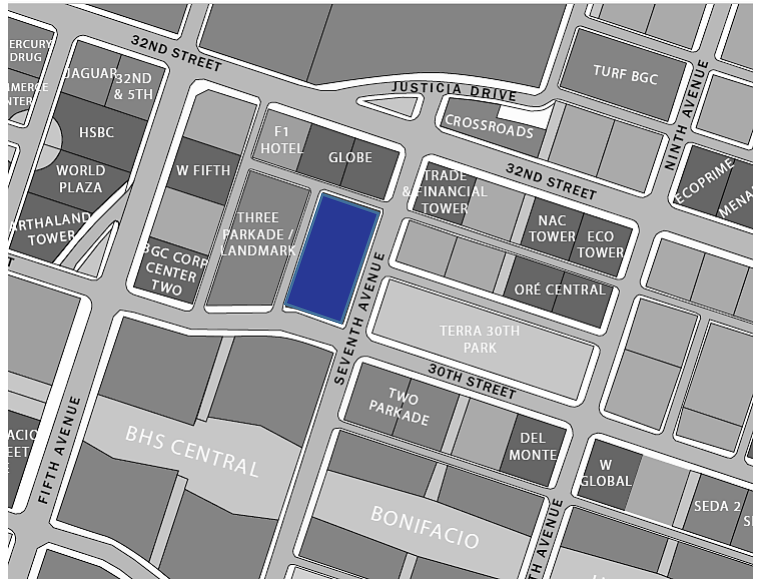
Seventh Avenue
corner 30th Street
Bonifacio Global City



W CITYCENTER

GENERAL INFORMATION

Developer	The W Group Inc.
Completion Date	4Q 2016
Building Grade	A
Gross Leasable Area	57,000 square meters
Typical Floor Plate	3,090 square meters
Net Usable Area	2,873.70 square meters
Efficiency	93%
Number of Floors	27
Certification	PEZA Certified Pre-certified LEED Gold
Floor Density Ratio	1:6.8
Parking Levels	9 floors (B1 - B3, 3F - 4F, 6F - 9F)
Air-Conditioning	Variable Refrigerant Flow
Back-up Power	100%
Elevators	15 Passenger 3 Service
Telco Provider	Globe, PLDT
Ceiling Height	3 meters
Handover Condition	Warm Shell



The material and information contained herein are intended only as a guide in helping the recipient hereof to make a decision on whether or not to enter into the appropriate transaction with respect to the Property described herein. The recipient hereof is expected to conduct its own review and assessment of the Property and its suitability for the recipient's intended purpose, including consultation with financial and legal advisers and counsel, for a thorough understanding of all considerations which may be relevant to the recipient's decision to enter into a transaction with respect to the Property described herein. Nothing contained herein may be taken as a representation, warranty, or offer on the part of the Property owner or its representative upon which a binding agreement with respect to the Property may be based. No representation or warranty is made with respect to the accuracy, completeness, or relevance of the material and information contained herein, and Leechiu Property Consultants, Inc., its stockholders, directors, officers, employees, representatives, and agents assume no liability arising from or in relation to the use or reliance of or by any person on the material and information contained herein.