

LEECHIU
PROPERTY CONSULTANTS

PROPERTY FOR LEASE

MENARCO TOWER

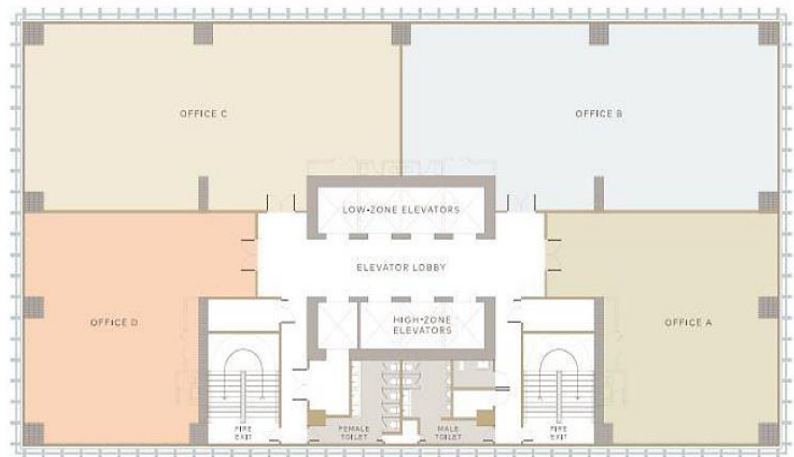
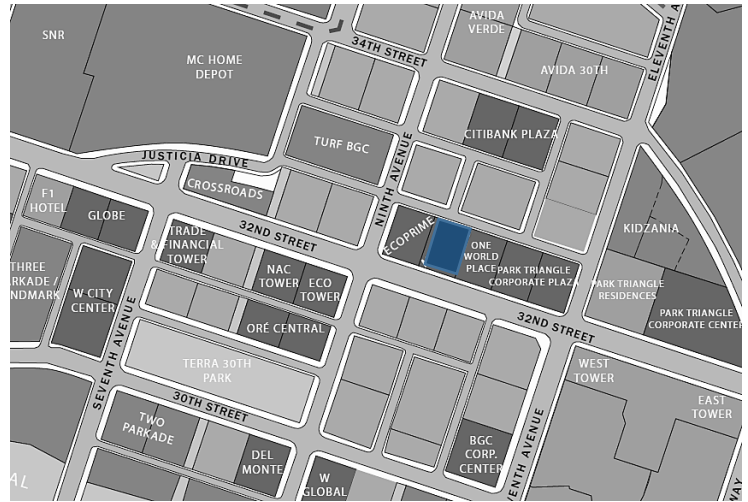
32nd Street
Bonifacio Global City



MENARCO TOWER

GENERAL INFORMATION

Developer	Menarco Development Corporation
Completion Date	3Q 2017
Building Grade	Prime
Gross Leasable Area	25,211.36 square meters
Typical Floor Plate	1,119 to 1,143.24 square meters
Net Usable Area	924.36 square meters
Efficiency	82.58% to 88.40%
Number of Floors	32
Office Floors	10F - 32F
Certification	PEZA Certified Pre-certified WELL Gold Pre-certified LEED Gold
Floor Density Ratio	1:8
Parking Levels	10 floors (B1 - B4, 2F - 7F)
Air-Conditioning	Variable Refrigerant Flow
Back-up Power	100%
Elevators	7 Passenger 1 Service
Telco Provider	Eastern Telecom, Globe, PLDT
Ceiling Height	2.8 meters
Handover Condition	Bare Shell



The material and information contained herein are intended only as a guide in helping the recipient hereof to make a decision on whether or not to enter into the appropriate transaction with respect to the Property described herein. The recipient hereof is expected to conduct its own review and assessment of the Property and its suitability for the recipient's intended purpose, including consultation with financial and legal advisers and counsel, for a thorough understanding of all considerations which may be relevant to the recipient's decision to enter into a transaction with respect to the Property described herein. Nothing contained herein may be taken as a representation, warranty, or offer on the part of the Property owner or its representative upon which a binding agreement with respect to the Property may be based. No representation or warranty is made with respect to the accuracy, completeness, or relevance of the material and information contained herein, and Leechiu Property Consultants, Inc., its stockholders, directors, officers, employees, representatives, and agents assume no liability arising from or in relation to the use or reliance of or by any person on the material and information contained herein.

LEECHIU
PROPERTY CONSULTANTS

www.leechiu.com

**EXCLUSIVE
AGENT**

PHILLIP ANONUEVO

0917.538.0115

phillip.Anonuevo@leechiu.com

JOY LOPEZ

0917.832.5949

joy.lopez@leechiu.com

MARCO DE PADUA

0998.847.7943

marco.depada@leechiu.com