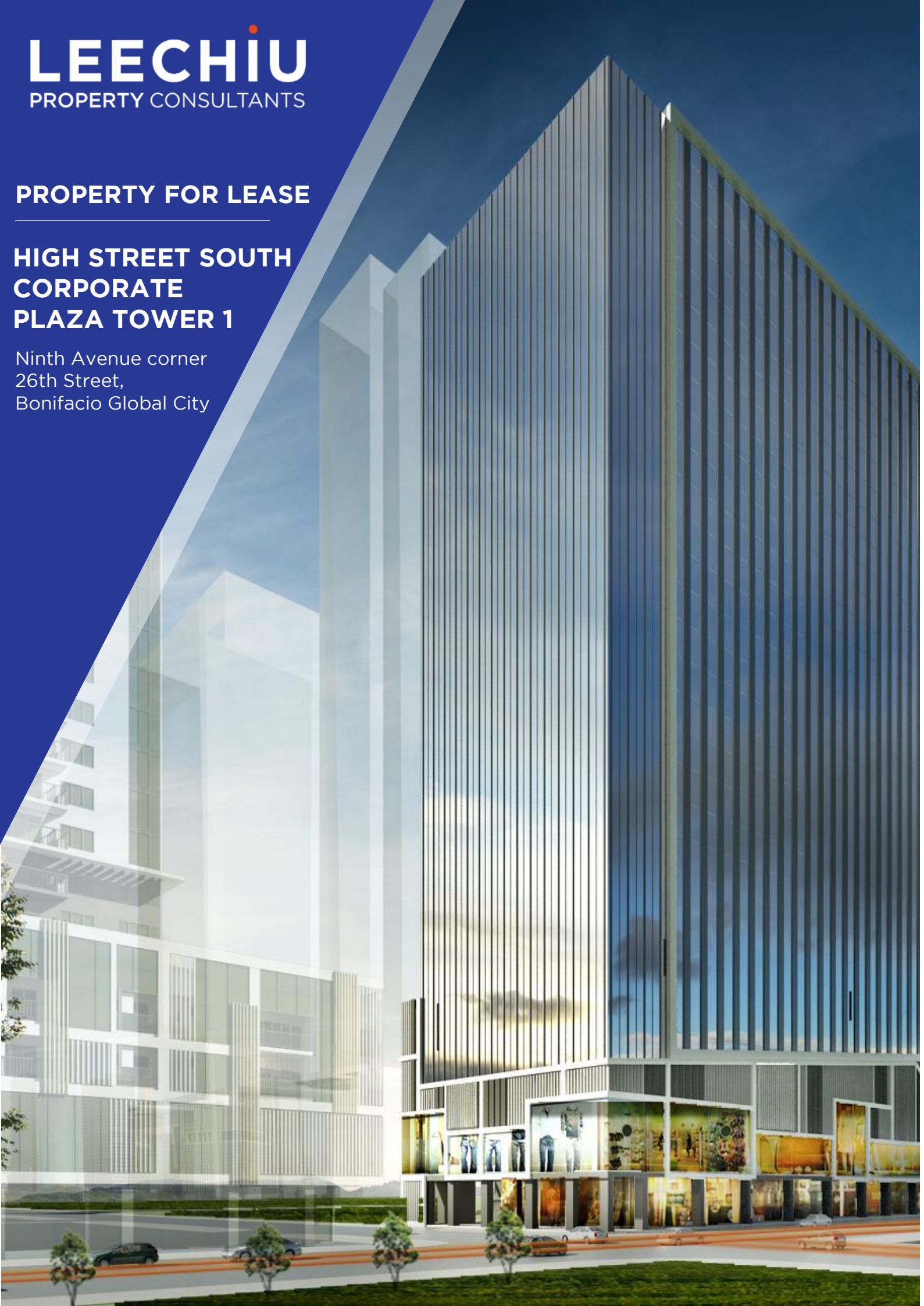


## PROPERTY FOR LEASE

### HIGH STREET SOUTH CORPORATE PLAZA TOWER 1

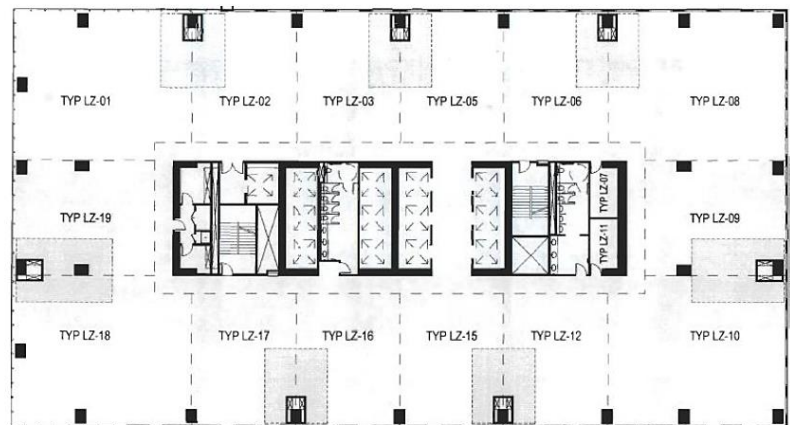
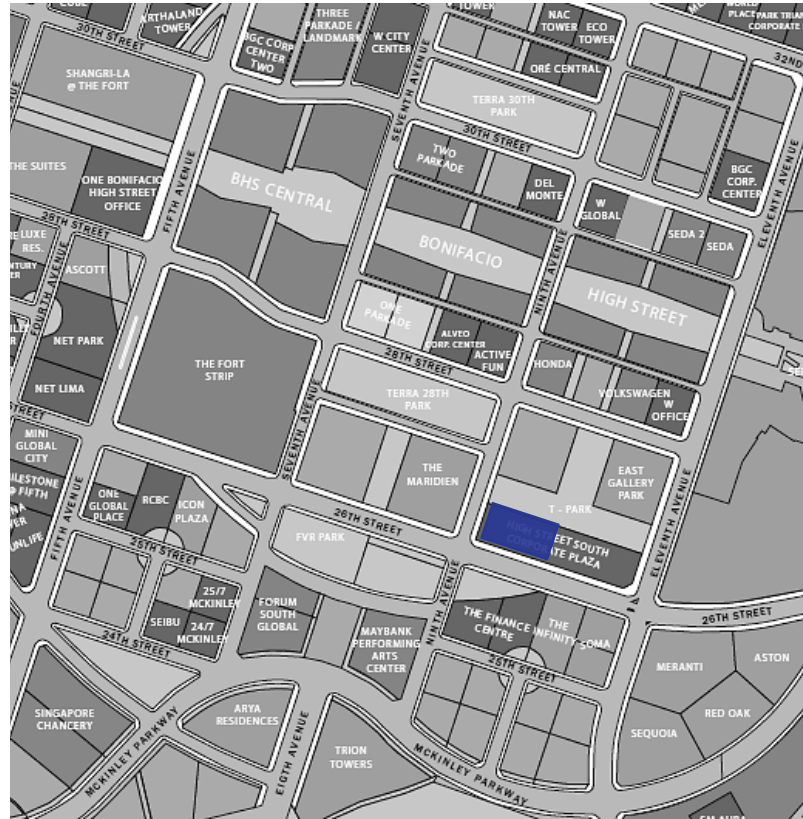
Ninth Avenue corner  
26th Street,  
Bonifacio Global City



# HIGH STREET SOUTH CORPORATE PLAZA TOWER 1

## GENERAL INFORMATION

<b>Developer</b>	Alveo Land.
<b>Completion Date</b>	1Q 2018
<b>Building Grade</b>	A
<b>Gross Leasable Area</b>	38,192 square meters
<b>Typical Floor Plate</b>	2,019 square meters
<b>Net Usable Area</b>	1,712 square meters
<b>Efficiency</b>	85%
<b>Number of Floors</b>	28
<b>Certifications</b>	Under Application for PEZA For LEED Certification
<b>Density Ratio</b>	1:9.3
<b>Available Space</b>	9F – 95 square meters 15F – 112 square meters 17F – 290 square meters 19F – 277 square meters 484 square meters 21F – 182 square meters
<b>Parking Levels</b>	10 floors (6 basement, 4 podium)
<b>Air-Conditioning</b>	Centralized Chilled Water
<b>Backup Power</b>	100%
<b>Elevators</b>	12 Passenger 3 Parking 1 Service
<b>Telco Provider</b>	Globe, PLDT
<b>Ceiling Height</b>	2.6
<b>Handover Condition</b>	Bare Shell



The material and information contained herein are intended only as a guide in helping the recipient hereof to make a decision on whether or not to enter into the appropriate transaction with respect to the Property described herein. The recipient hereof is expected to conduct its own review and assessment of the Property and its suitability for the recipient's intended purpose, including consultation with financial and legal advisers and counsel, for a thorough understanding of all considerations which may be relevant to the recipient's decision to enter into a transaction with respect to the Property described herein. Nothing contained herein may be taken as a representation, warranty, or offer on the part of the Property owner or its representative upon which a binding agreement with respect to the Property may be based. No representation or warranty is made with respect to the accuracy, completeness, or relevance of the material and information contained herein, and Leechiu Property Consultants, Inc., its stockholders, directors, officers, employees, representatives, and agents assume no liability arising from or in relation to the use or reliance of or by any person on the material and information contained herein.