

LEECHIU
PROPERTY CONSULTANTS

PROPERTY FOR LEASE

FRABELLE CORPORATE PLAZA

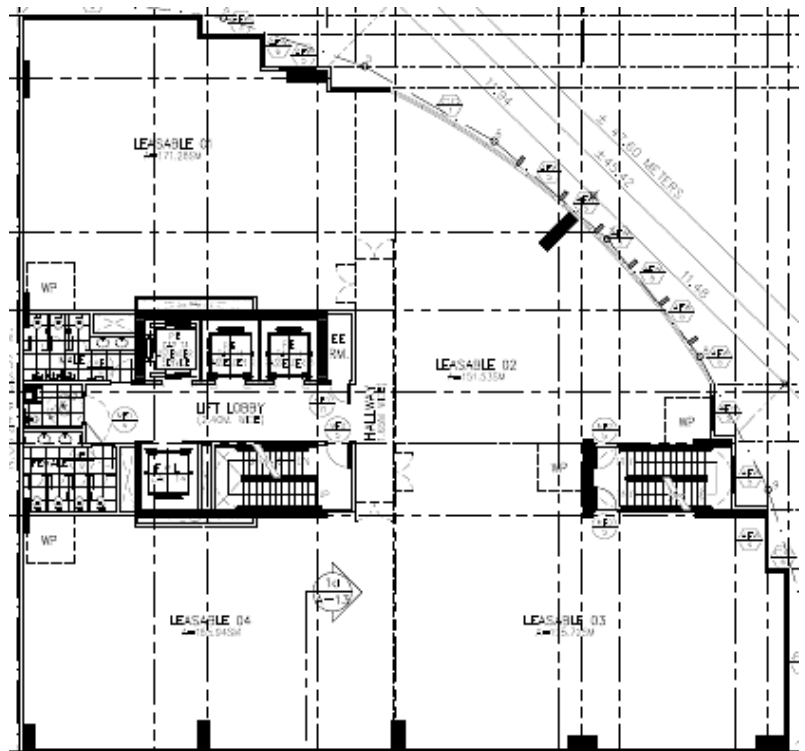
Tordesillas Street corner
Bautista Street
Salcedo Village
Makati City



FRABELLE CORPORATE PLAZA

GENERAL INFORMATION

Developer	Frabelle Fishing Corporation
Completion Date	3Q 2018
Building Grade	B+
Gross Leasable Area	6,731.29 square meters
Typical Floor Plate	828.23 square meters
Net Usable Area	655.67 square meters
Efficiency	79%
Number of Floors	16
Office Floors	8F - 16F
Certification	For LEED Certification
Floor Density Ratio	1:6.5
Parking Levels	6 floors (2F - 7F)
Air-Conditioning	Variable Refrigerant Flow
Backup Power	100%
Elevators	3 Passenger 1 Service
Telco Provider	Multiple Providers
Ceiling Height	3 meters
Handover Condition	Warm Shell



The material and information contained herein are intended only as a guide in helping the recipient hereof to make a decision on whether or not to enter into the appropriate transaction with respect to the Property described herein. The recipient hereof is expected to conduct its own review and assessment of the Property and its suitability for the recipient's intended purpose, including consultation with financial and legal advisers and counsel, for a thorough understanding of all considerations which may be relevant to the recipient's decision to enter into a transaction with respect to the Property described herein. Nothing contained herein may be taken as a representation, warranty, or offer on the part of the Property owner or its representative upon which a binding agreement with respect to the Property may be based. No representation or warranty is made with respect to the accuracy, completeness, or relevance of the material and information contained herein, and Leechiu Property Consultants, Inc., its stockholders, directors, officers, employees, representatives, and agents assume no liability arising from or in relation to the use or reliance of or by any person on the material and information contained herein.