

LEECHIU
PROPERTY CONSULTANTS

PROPERTY FOR LEASE

NEX Tower

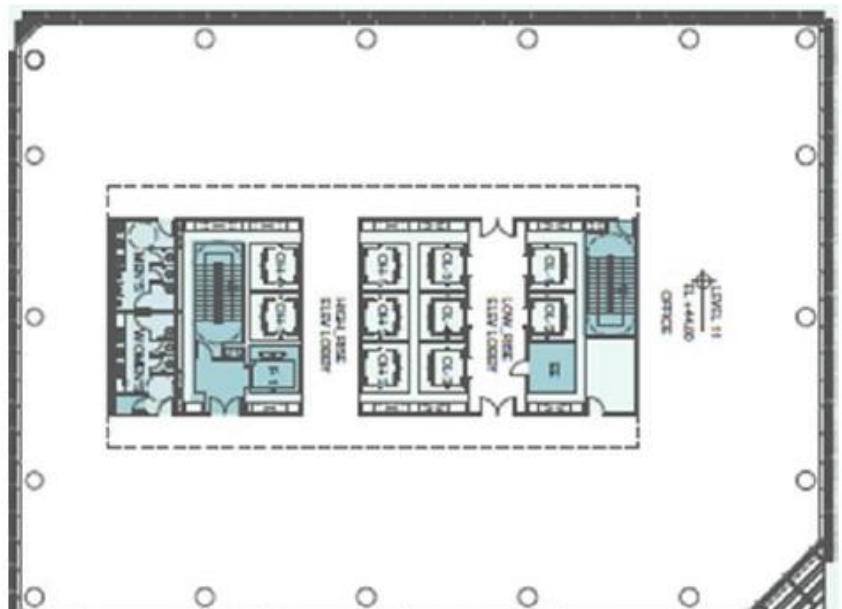
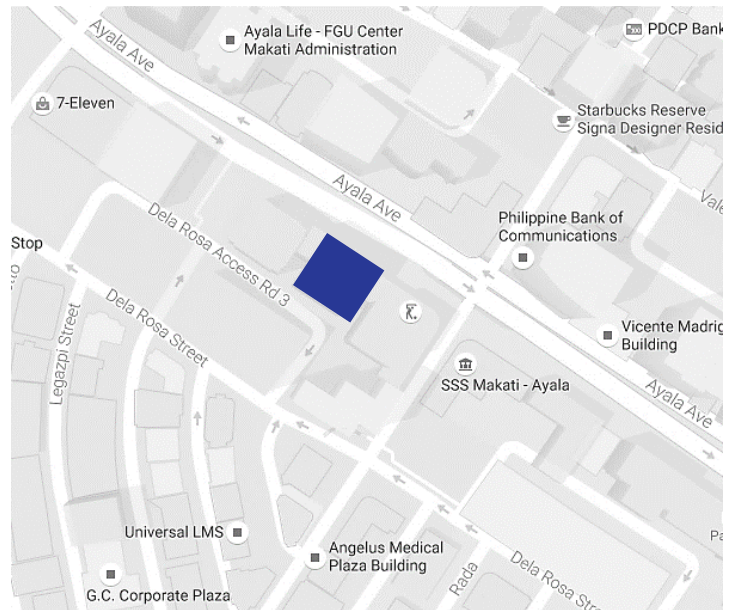
6786 Ayala Avenue,
Makati City



NEX TOWER

GENERAL INFORMATION

Developer	NEX Holdings
Completion Date	3Q 2018
Gross Leasable Area	34,377.30 square meters
Typical Floor Plate	Approx. 1,407.21 square meters
Net Usable Area	Approx. 1,143.64 square meters
Efficiency	Approx. 81.27%
Number of Floors	28
Office Floors	3F - 28F
Certifications	Under Application for PEZA For LEED Gold Certification
Floor Density Ratio	1:8
Parking Levels	7 floors (B1 - B7)
Air-Conditioning	Variable Refrigerant Flow
Backup Power	100%
Elevators	6 Passenger - Low Zone 5 Passenger - High Zone 1 Service 2 Parking 1 Retail
Telco Provider	Globe, PLDT, SMART
Ceiling Height	3 meters
Handover Condition	Bare Shell



The material and information contained herein are intended only as a guide in helping the recipient hereof to make a decision on whether or not to enter into the appropriate transaction with respect to the Property described herein. The recipient hereof is expected to conduct its own review and assessment of the Property and its suitability for the recipient's intended purpose, including consultation with financial and legal advisers and counsel, for a thorough understanding of all considerations which may be relevant to the recipient's decision to enter into a transaction with respect to the Property described herein. Nothing contained herein may be taken as a representation, warranty, or offer on the part of the Property owner or its representative upon which a binding agreement with respect to the Property may be based. No representation or warranty is made with respect to the accuracy, completeness, or relevance of the material and information contained herein, and Leechiu Property Consultants, Inc., its stockholders, directors, officers, employees, representatives, and agents assume no liability arising from or in relation to the use or reliance of or by any person on the material and information contained herein.