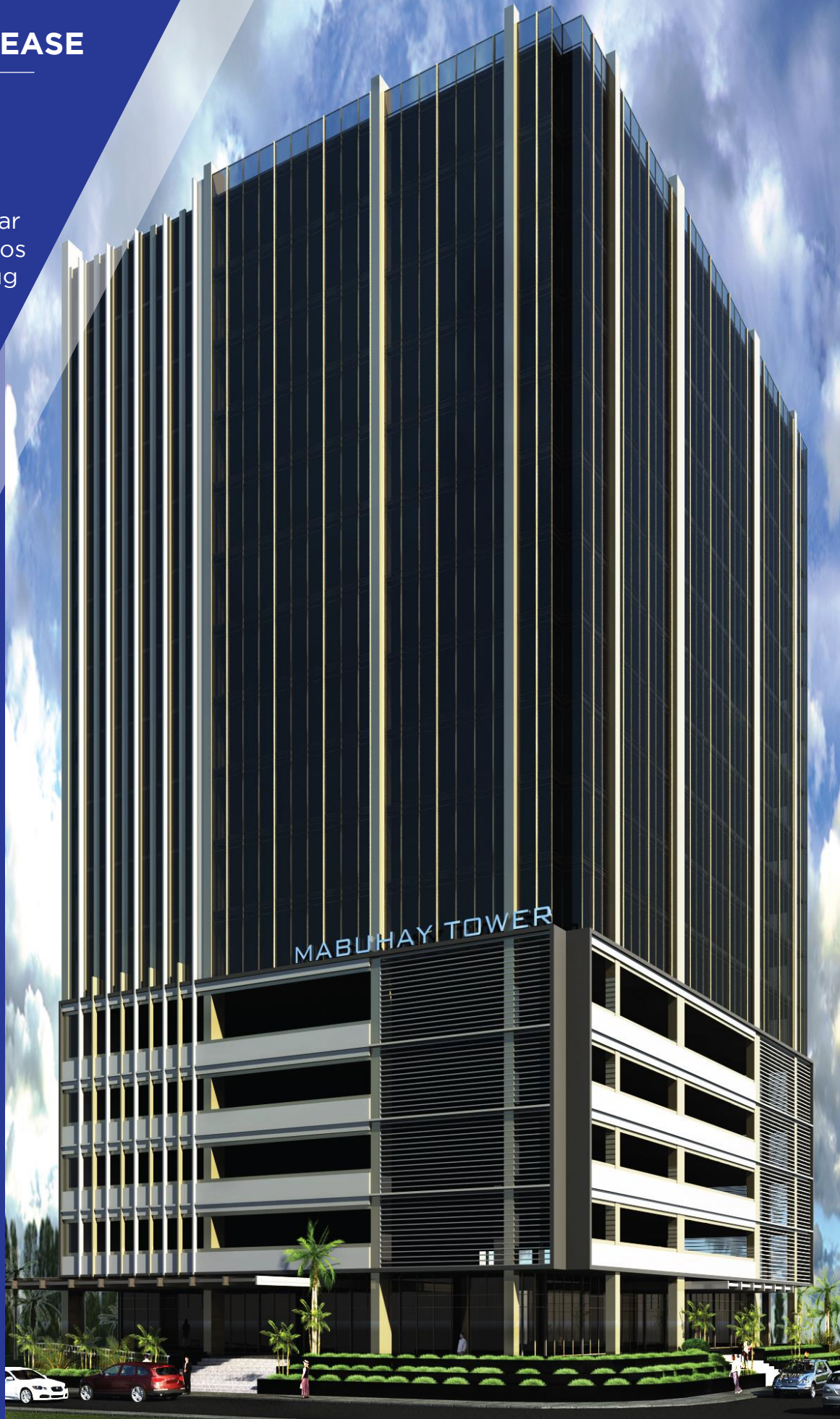


PROPERTY FOR LEASE

**MABUHAY
TOWER**

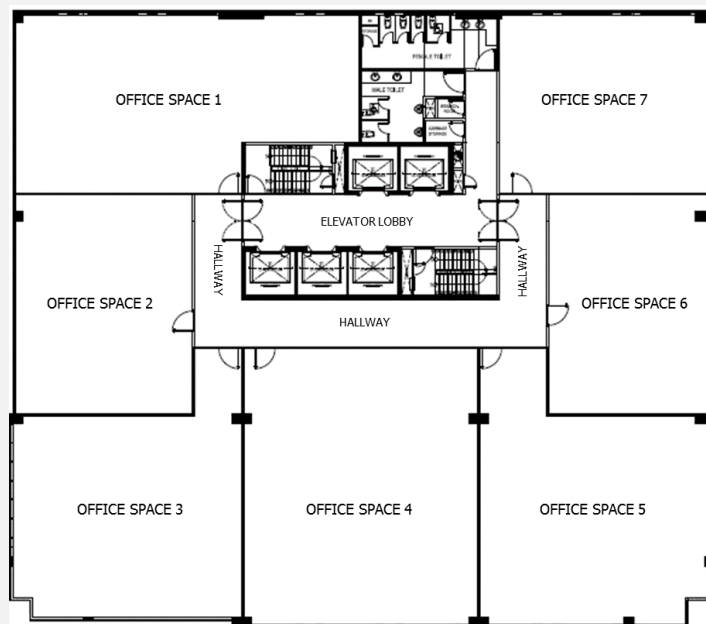
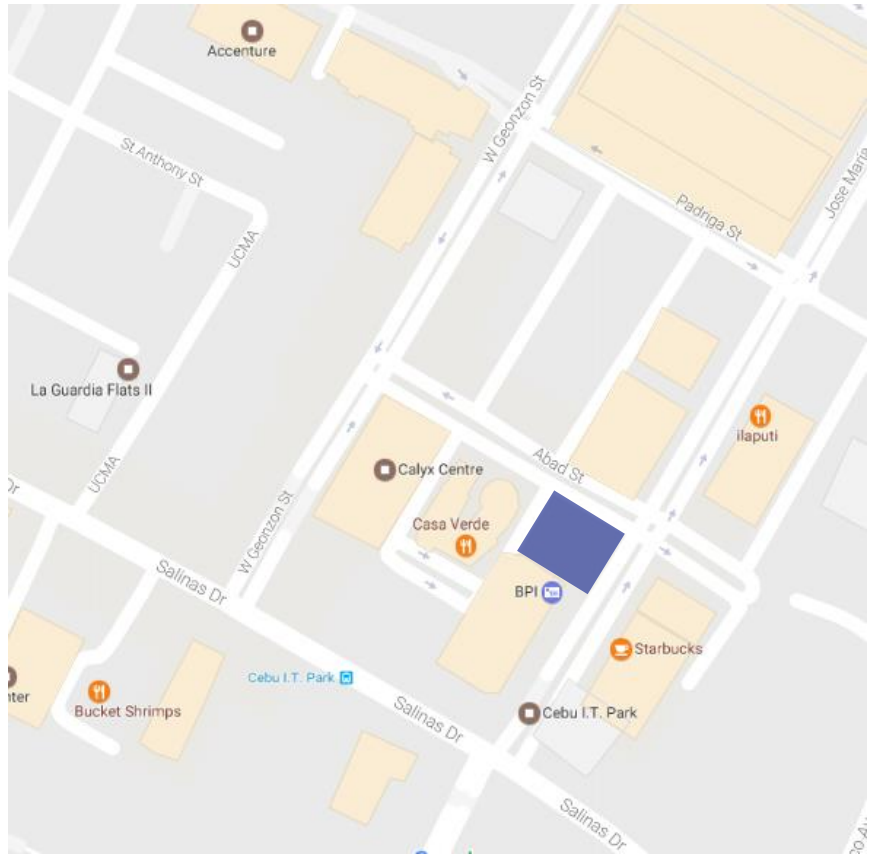
Corner Jose Maria Del Mar
Street & Jose Abad Santos
Cebu IT Park, Brgy. Lahug
Cebu City



MABUHAY TOWER

TECHNICAL INFORMATION

Developer	Enrison Holdings Inc.
Completion Date	1Q 2018
Gross Leasable Area	9,796.31 square meters
Typical Floor Plate	1,031.71 square meters
Efficiency	90%
No. of Floors	17
Office Floors	6F - 15F
Certifications	PEZA Certified
Parking Levels	4 floors (2F- 5F)
Air-conditioning	Variable Refrigerant Flow
Back-up Power	100%
Elevators	5 Passenger
Telco Provider	Globe, PLDT, Rise
Ceiling Height	2.7 meters
Handover Condition	Bare Shell w/ AC



The material and information contained herein are intended only as a guide in helping the recipient hereof to make a decision on whether or not to enter into the appropriate transaction with respect to the Property described herein. The recipient hereof is expected to conduct its own review and assessment of the Property and its suitability for the recipient's intended purpose, including consultation with financial and legal advisers and counsel, for a thorough understanding of all considerations which may be relevant to the recipient's decision to enter into a transaction with respect to the Property described herein. Nothing contained herein may be taken as a representation, warranty, or offer on the part of the Property owner or its representative upon which a binding agreement with respect to the Property may be based. No representation or warranty is made with respect to the accuracy, completeness, or relevance of the material and information contained herein, and Leechiu Property Consultants, Inc., its stockholders, directors, officers, employees, representatives, and agents assume no liability arising from or in relation to the use or reliance of or by any person on the material and information contained herein.