

OFFICE SPACE FOR LEASE

**SINOCAN
CORPORATE
CENTER**

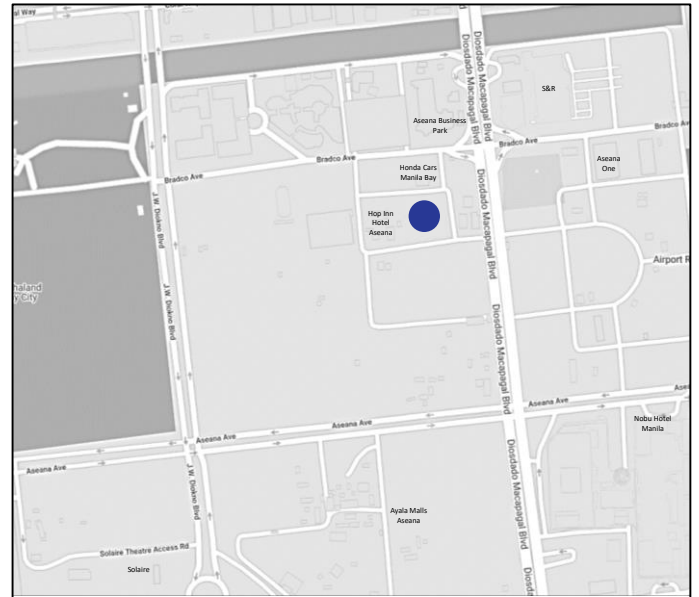
Aseana Business Park,
Parañaque City



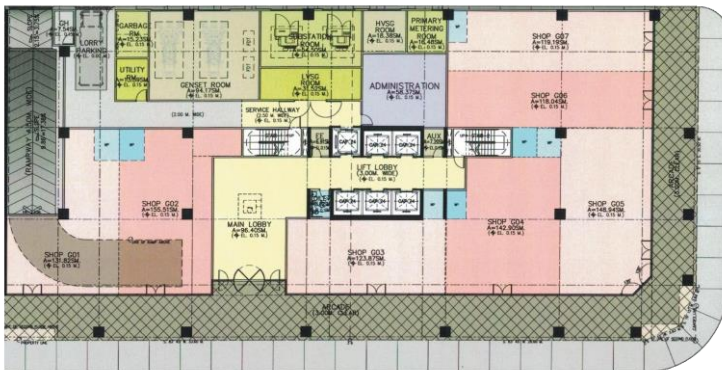
SINOCAN CORPORATE CENTER

GENERAL INFORMATION

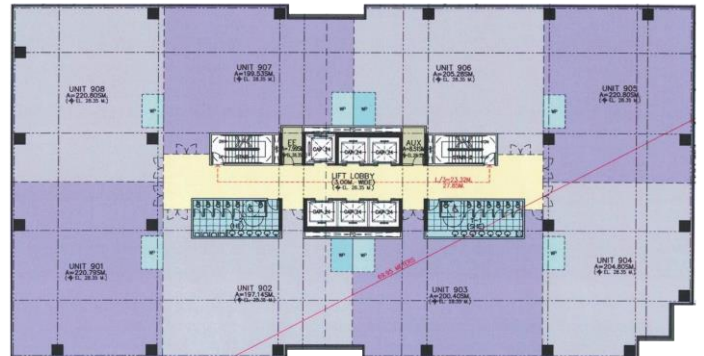
Developer	Sinocan Realty Corporation
Completion Date	3Q 2021
Gross Leasable Area	15,627.73 sqm
Typical Floor Plate	1,836.33 sqm
Density	6.0sqm based on GLA
Backup Power	100% Back-up
Aircon System	VRF Aircon System
Ceiling Height	2.6M
Handover Condition	Warm Shell



GROUND FLOOR PLAN



TYPICAL FLOOR PLAN



The material and information contained herein are intended only as a guide in helping the recipient hereof to make a decision on whether or not to enter into the appropriate transaction with respect to the Property described herein. The recipient hereof is expected to conduct its own review and assessment of the Property and its suitability for the recipient's intended purpose, including consultation with financial and legal advisers and counsel, for a thorough understanding of all considerations which may be relevant to the recipient's decision to enter into a transaction with respect to the Property described herein. Nothing contained herein may be taken as a representation, warranty, or offer on the part of the Property owner or its representative upon which a binding agreement with respect to the Property may be based. No representation or warranty is made with respect to the accuracy, completeness, or relevance of the material and information contained herein, and Leechiu Property Consultants, Inc., its stockholders, directors, officers, employees, representatives, and agents assume no liability arising from or in relation to the use or reliance of or by any person on the material and information contained herein.