

PROPERTY FOR LEASE

JOHNDORF TOWER

Mindanao Avenue,
Cebu Business Park,
Cebu City

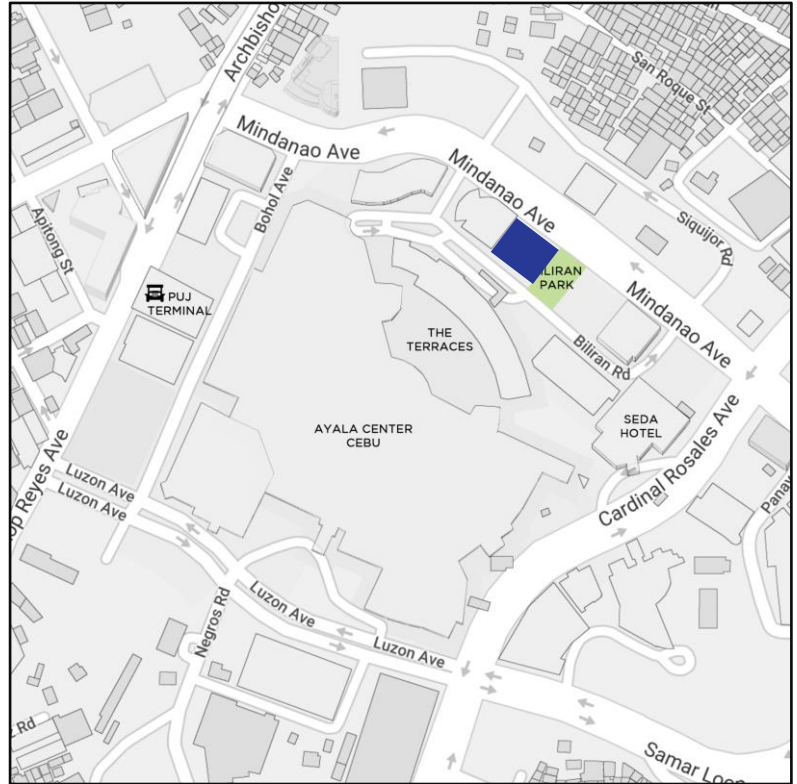


JOHNDORF
Ventures Corporation

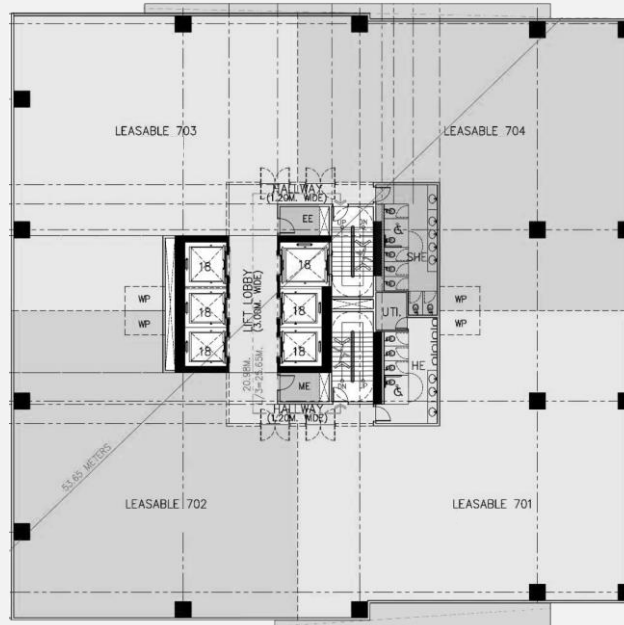
JOHNDORF TOWER

TECHNICAL INFORMATION

Developer	Johndorf Ventures Corporation
Completion Date	4Q 2022
Gross Leasable Area	17,860 square meters
Typical Floor Plate	1,400 square meters
Efficiency	85%
No. of Floors	21
Density	1:5
Certifications	PEZA, Pre-Certified LEED Gold
Parking Levels	5 (2 nd – 6 th)
Air-conditioning	Variable Refrigerant Flow
Back-up Power	100%
Elevators	5
Telco Provider	Multiple Telco Providers
Ceiling Height	Slab to Slab – 4.0 meters Floor to Ceiling – 3.0 meters
Handover Condition	Warm Shell



TYPICAL FLOOR PLAN



The material and information contained herein are intended only as a guide in helping the recipient hereof to make a decision on whether or not to enter into the appropriate transaction with respect to the Property described herein. The recipient hereof is expected to conduct its own review and assessment of the Property and its suitability for the recipient's intended purpose, including consultation with financial and legal advisers and counsel, for a thorough understanding of all considerations which may be relevant to the recipient's decision to enter into a transaction with respect to the Property described herein. Nothing contained herein may be taken as a representation, warranty, or offer on the part of the Property owner or its representative. Upon which a binding agreement with respect to the Property may be based. No representation or warranty is made with respect to the accuracy, completeness, or relevance of the material and information contained herein, and Leechiu Property Consultants, Inc., its stockholders, directors, officers, employees, representatives, and agents assume no liability arising from or in relation to the use or reliance of or by any person on the material and information contained herein.