

LEGEND

APPROX. DISTANCE

	Subject Property	
1	Mountview Industrial Park	1.4KM
2	San Lazaro Leisure Park	4.4KM
3	Canyon Ranch	4.6KM
4	Walter Mart Carmona	3.5KM
5	Carmona Hospital & Medical Center	3.8KM
6	Puregold Carmona	4.1KM
7	Carmona Toll Gate	5.8KM
8	People's Technology Complex	4.6KM
9	Manila Southwoods Golf and Country Club	4.3KM



PROPERTY DETAILS

Address	Governor's Dr., Ulong Tubig, Carmona, Cavite
Lot Area	29,477 square meters
Price per sqm	PHP 14,000 + VAT
Total Asking Price	PHP 412,678,000 + VAT
Frontage	125.34 meters
Zoning Classification	Commercial

For more information, please contact:

YELI CAMUS

REB Lic.# 10707, ID#181792769 until 03/15/22
PTR# 8127910 until 12/31/20



0917.832.3225



yeli.camus@leechiu.com

TINA CORNEJO

REB Lic.# 7612, ID# 17-357376 until 11/29/2020
PTR# 8127909 until 12/31/2020



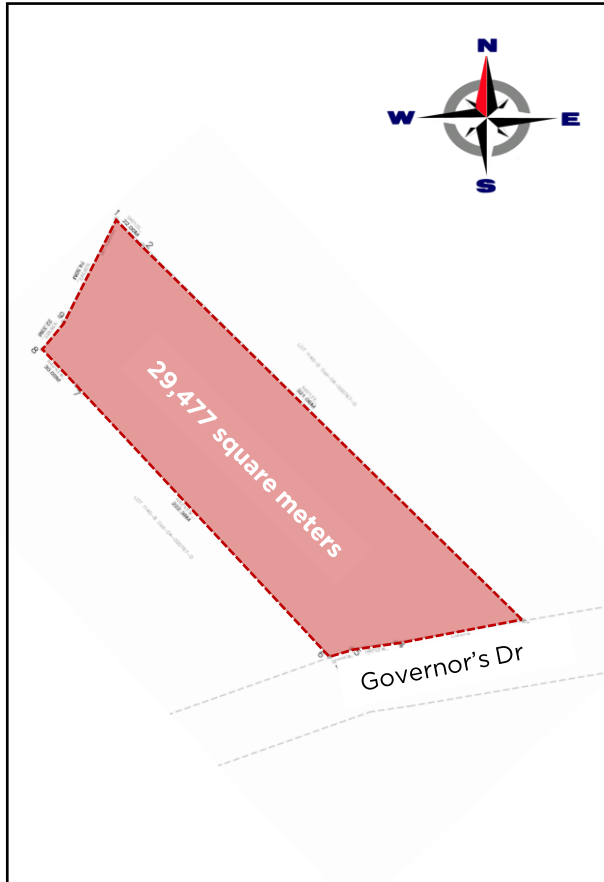
0917.895.8462



tina.cornejo@leechiu.com

The material and information contained herein are intended only as a guide in helping the recipient hereof to make a decision on whether or not to enter into the appropriate transaction with respect to the Property described herein. The recipient hereof is expected to conduct its own review and assessment of the Property and its suitability for the recipient's intended purpose, including consultation with financial and legal advisers and counsel, for a thorough understanding of all considerations which may be relevant to the recipient's decision to enter into a transaction with respect to the Property described herein. Nothing contained herein may be taken as a representation, warranty, or offer on the part of the Property owner or its representative upon which a binding agreement with respect to the Property may be based. No representation or warranty is made with respect to the accuracy, completeness, or relevance of the material and information contained herein, and Leechiu Property Consultants, Inc., its stockholders, directors, officers, employees, representatives, and agents assume no liability arising from or in relation to the use or reliance of or by any person on the material and information contained herein.

LOT PLAN



PROPERTY PHOTOS



For more
information,
please contact:

TAM ANGEL

REB Lic.# 12765, ID# 2818266 until 05/01/2020
PTR# 8127916 until 12/31/20



0917.791.7233



tam.angel@leechiu.com

The material and information contained herein are intended only as a guide in helping the recipient hereof to make a decision on whether or not to enter into the appropriate transaction with respect to the Property described herein. The recipient hereof is expected to conduct its own review and assessment of the Property and its suitability for the recipient's intended purpose, including consultation with financial and legal advisers and counsel, for a thorough understanding of all considerations which may be relevant to the recipient's decision to enter into a transaction with respect to the Property described herein. Nothing contained herein may be taken as a representation, warranty, or offer on the part of the Property owner or its representative upon which a binding agreement with respect to the Property may be based. No representation or warranty is made with respect to the accuracy, completeness, or relevance of the material and information contained herein, and Leechiu Property Consultants, Inc., its stockholders, directors, officers, employees, representatives, and agents assume no liability arising from or in relation to the use or reliance of or by any person on the material and information contained herein.