

---

## FITTED SPACE FOR SUBLEASE

---

### One/NEO

12<sup>th</sup> Floor, 26th Street corner Third  
Avenue, Post Proper (South Side),  
Bonifacio Global City

**LEECHIU**  
PROPERTY CONSULTANTS  
Our insights. Your success.





# One/NEO



Entrance Door



Workstation Office



26th Street corner Third Avenue, Post Proper (South Side), Bonifacio Global City

The material and information contained herein are intended only as a guide in helping the recipient hereof to make a decision on whether or not to enter into the appropriate transaction with respect to the Property described herein. The recipient hereof is expected to conduct its own review and assessment of the Property and its suitability for the recipient's intended purpose, including consultation with financial and legal advisers and counsel, for a thorough understanding of all considerations which may be relevant to the recipient's decision to enter into a transaction with respect to the Property described herein. Nothing contained herein may be taken as a representation, warranty, or offer on the part of the Property owner or its representative upon which a binding agreement with respect to the Property may be based. No representation or warranty is made with respect to the accuracy, completeness, or relevance of the material and information contained herein, and Leechiu Property Consultants, Inc., its stockholders, directors, officers, employees, representatives, and agents assume no liability arising from or in relation to the use or reliance of or by any person on the material and information contained herein.

# GENERAL INFORMATION

## NUMBER OF FLOORS

17

## AVAILABLE SPACE

12F – 591 sqm

## QUOTED RENT (PSM)

PhP 1,150

## BUILDING DUES (PSM)

PhP 205

## HANDOVER CONDITION

Fully Fitted with finished flooring, and ceiling, as well as the following:

- ✓ Fully fitted meeting rooms and manager offices
- ✓ Fitted production and operations area
- ✓ Satellite File Cabinets
- ✓ Server Room with Precision Air Conditioning Unit
- ✓ Overhead and Floor Cabinets

## REMARKS

This is for a sublease arrangement. The fitted space is suitable for traditional and BPO business. Various support facilities are available nearby, with the building being only a stone's throw away from Burgos Circle and Six/Seven Neo complex (formerly Net Lima and Net Park).

**LEECHIU**  
PROPERTY CONSULTANTS  
Our insights. Your success.

**MIKKO BARRANDA**

REB Lic.# 12764, ID# 18916206 until 07/25/2021  
PTR# 8535858 until 12/31/2021

0917.551.7133

mikko.barranda@leechiu.com

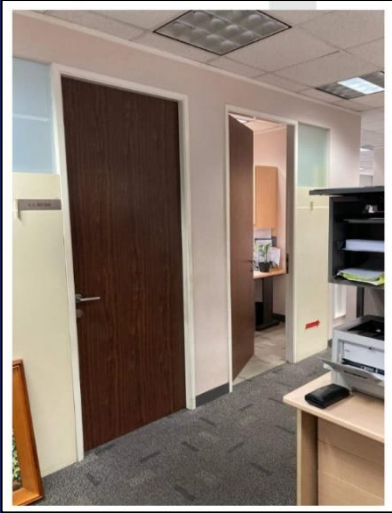
**JO ABELLANOSA**

REB Lic.# 15411, ID# 193210253 until 06/24/2023  
PTR# 8535854 until 12/31/2021

0998.847.7941

jo.abellanos@leechiu.com

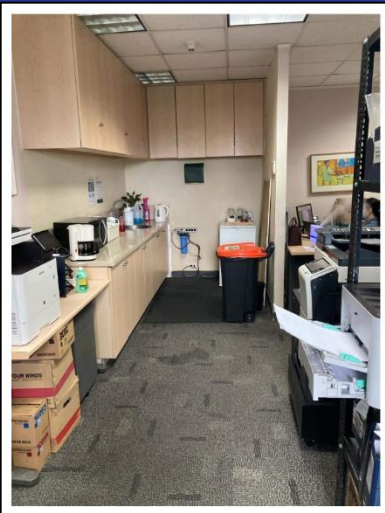
# One/NEO



Fitted Rooms



Production Area

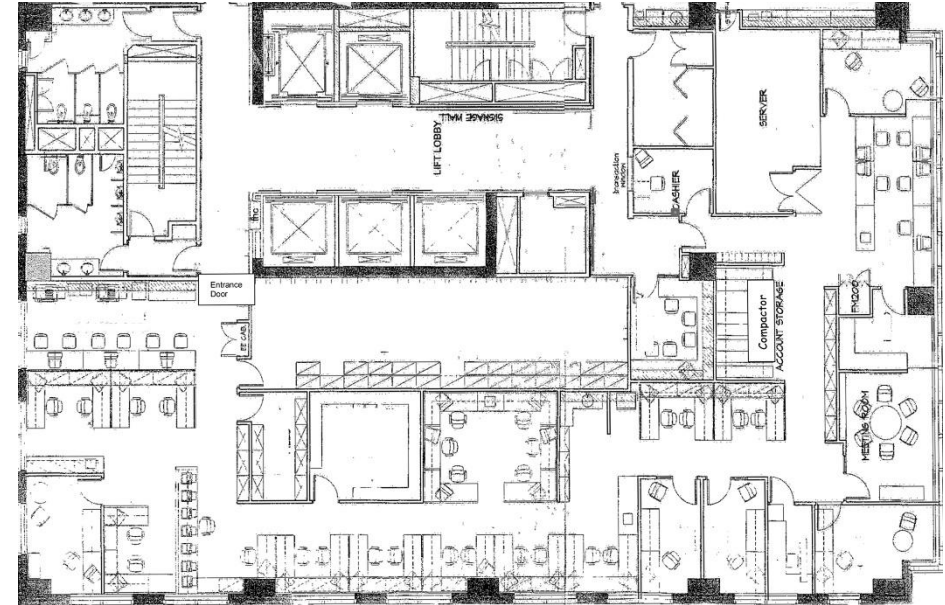


Teapoint Area



Pigeon Holes by Entrance

# FLOOR PLAN



\*Approx 50-60 seats

**LEECHIU**  
PROPERTY CONSULTANTS  
Our insights. Your success.

**MIKKO BARRANDA**

REB Lic# 12764, ID# 18916206 until 07/25/2021  
PTR# 8535858 until 12/31/2021

📞 0917.551.7133

✉️ mikko.barranda@leechiu.com

**JO ABELLANOSA**

REB Lic# 15411, ID# 193210253 until 06/24/2023  
PTR# 8535854 until 12/31/2021

📞 0998.847.7941

✉️ jo.abellanos@leechiu.com