
SPACE FOR LEASE

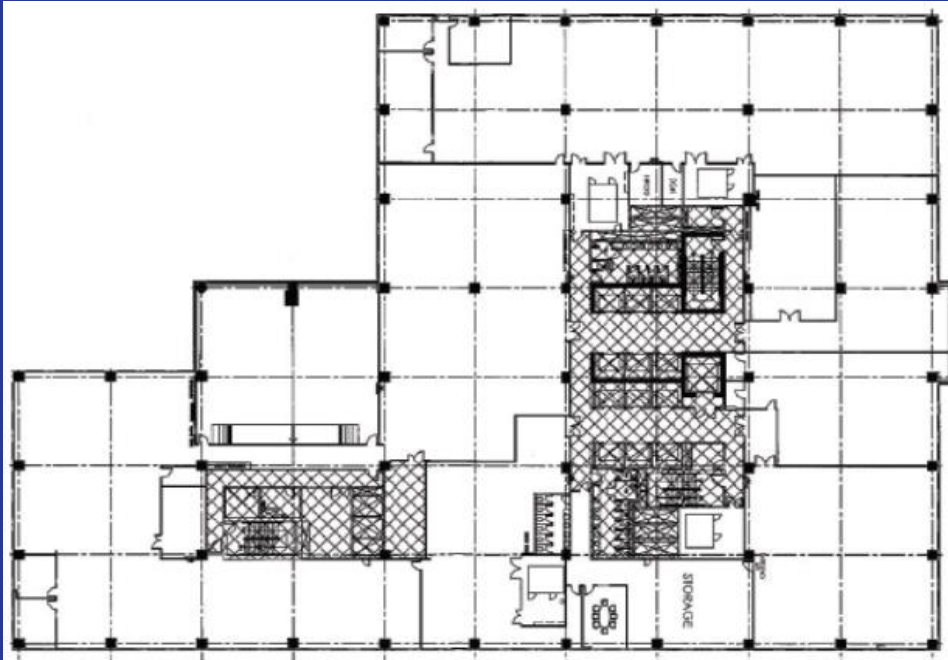
ELJ Communication Center

Eugenio Lopez Dr., Diliman, Quezon
City

LEECHIU
PROPERTY CONSULTANTS
Our insights. Your success.



ELJ Communications Center



Typical Floor Plan

Eugenio Lopez Dr., Diliman, Quezon City

The material and information contained herein are intended only as a guide in helping the recipient hereof to make a decision on whether or not to enter into the appropriate transaction with respect to the Property described herein. The recipient hereof is expected to conduct its own review and assessment of the Property and its suitability for the recipient's intended purpose, including consultation with financial and legal advisers and counsel, for a thorough understanding of all considerations which may be relevant to the recipient's decision to enter into a transaction with respect to the Property described herein. Nothing contained herein may be taken as a representation, warranty, or offer on the part of the Property owner or its representative upon which a binding agreement with respect to the Property may be based. No representation or warranty is made with respect to the accuracy, completeness, or relevance of the material and information contained herein, and Leechiu Property Consultants, Inc., its stockholders, directors, officers, employees, representatives, and agents assume no liability arising from or in relation to the use or reliance of or by any person on the material and information contained herein.

GENERAL INFORMATION

NUMBER OF FLOORS	15
CERTIFICATIONS	PEZA
GROSS LEASEABLE AREA	22,634.48 sqm
BACK-UP POWER	100%
AVAILABLE SPACE	6F – 3,521.12 sqm 7F – 3,499.66 sqm 8F – 2,246.22 sqm 9F – 3,345.37 sqm Total: 12,612.37 sqm
QUOTED RENT (PSM)	PHP 800.00
BUILDING DUES (PSM)	PHP 180.00
HANDOVER CONDITION	Semi-Fitted (with ceilings, carpet floors, and fitted rooms)
AC SYSTEM	Centralized Chilled Water
AC CHARGE	PHP 0.60/hr/sqm
PARKING (/slot/month)	PHP 5,000.00

LEECHIU
PROPERTY CONSULTANTS
Our insights. Your success.

JO ABELLANOSA

REB Lic. # 15411, ID# 193210253 until 06/24/2023
PTR# 8535854 until 12/31/2021

📞 0998.847.7941
✉️ jo.abellanosa@leechiu.com