

PROPERTY FOR SALE

LEECHIU
PROPERTY CONSULTANTS
Our insights. Your success.

Governor's Drive

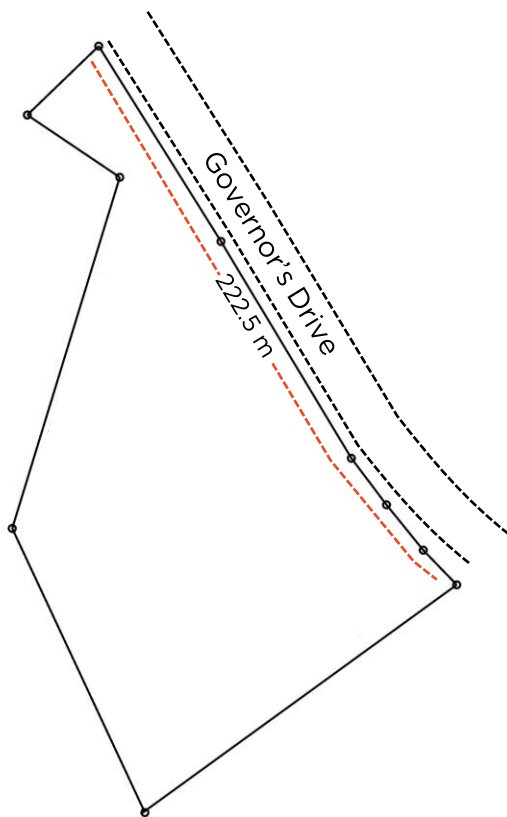
Dasmariñas City, Cavite

Total Lot Area: 18,905 sqm

Asking Price/Sqm: PhP 15,000 + VAT

Asking Price Total: PhP 283,575,000 + VAT

LOT PLAN



Google Maps view link click [here](#)

OTHER DETAILS

- 222.5m frontage along Governor's Drive
- Highly accessible via Governor's Drive and Aguinaldo Highway
- Approximately 890m to the proposed CALAX-Silang Interchange and 5km to Governor's Drive Interchange
- 12km to Carmona-SLEX Toll Plaza

GET IN TOUCH

RALPH DELA CRUZ

REB Lic.# 21909, ID# 20-3487507 until 04/01/2024

0917.869.6795

ralph.delacruz@leechiu.com

MICHAEL GUZMAN

0917.120.2494

michael.guzman@leechiu.com

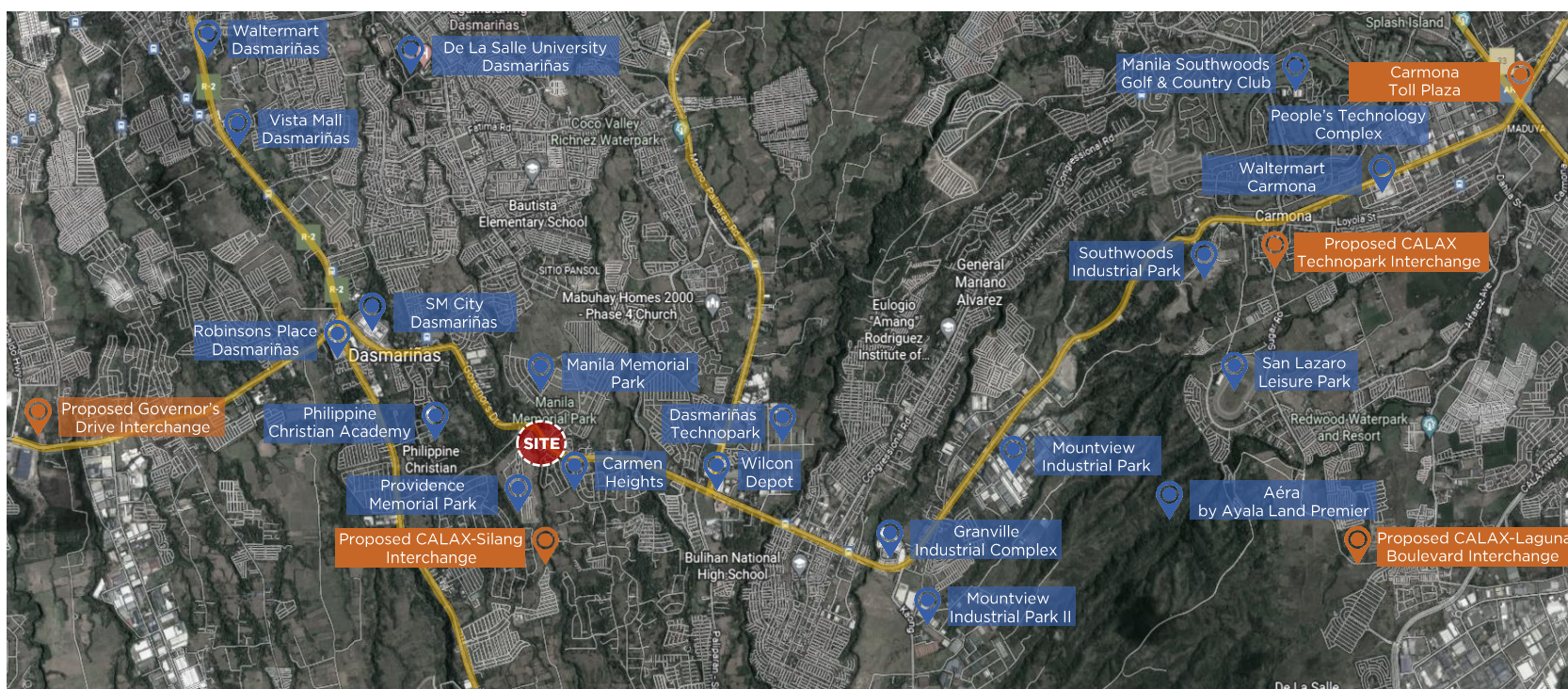
The material and information contained herein are intended only as a guide in helping the recipient hereof to make a decision on whether or not to enter into the appropriate transaction with respect to the Property described herein. The recipient hereof is expected to conduct its own review and assessment of the Property and its suitability for the recipient's intended purpose, including consultation with financial and legal advisers and counsel, for a thorough understanding of all considerations which may be relevant to the recipient's decision to enter into a transaction with respect to the Property described herein. Nothing contained herein may be taken as a representation, warranty, or offer on the part of the Property owner or its representative upon which a binding agreement with respect to the Property may be based. No representation or warranty is made with respect to the accuracy, completeness, or relevance of the material and information contained herein, and Leechiu Property Consultants, Inc., its stockholders, directors, officers, employees, representatives, and agents assume no liability arising from or in relation to the use or reliance of or by any person on the material and information contained herein.

ADDITIONAL INFORMATION

PROPERTY PHOTO



LOCATION MAP



Google Maps view link click [here](#)



YouTube video tour click [here](#)

GET IN TOUCH

RALPH DELA CRUZ

REB Lic.# 21909, ID# 20-3487507 until 04/01/2024

0917.869.6795

ralph.delacruz@leechiu.com

MICHAEL GUZMAN

0917.120.2494

michael.guzman@leechiu.com