

Major Mixed Use Development Opportunity on Quirino Highway (MRT7), Novaliches

40,562 sqm corner lot on Quirino Highway, Novaliches, Caloocan

Suitable for development into medium to high density commercial or residential mixed use

MRT7 along Quirino Highway targeted to be partially operational by 4Q 2022

LEECHIU
PROPERTY CONSULTANTS



**Boundaries shown for identification purposes only*

[Click here for Google Map location](#)

Address Quirino Highway
Barangay 179, Novaliches
Caloocan City

Lot Area 40,562 square meters

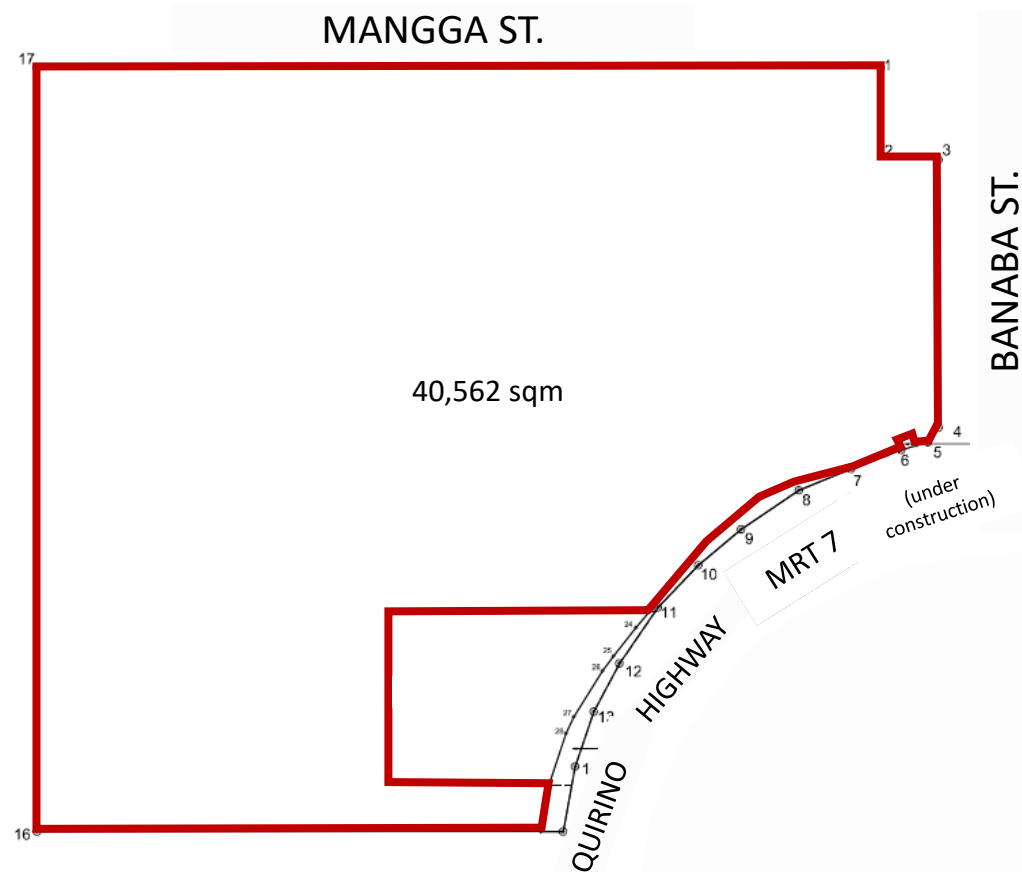
Minimum Selling Price PHP 38,500 per sqm plus VAT

Zoning Commercial 2 (C2)

- Medium to high density commercial activities, including shopping centers and mixed-use facilities
- Allows for all uses permitted in R1, R2, R3 and C1 zones
- Maximum building height of 45 meters, or approx. 15 floors
- Development subject to necessary local government unit approvals

Other Information

- * 4 street frontages along Quirino Highway, Banaba St., Mangga St. and HV dela Costa
- * Frontage on Quirino Highway of approx. 110 meters
- * Gently sloping topography

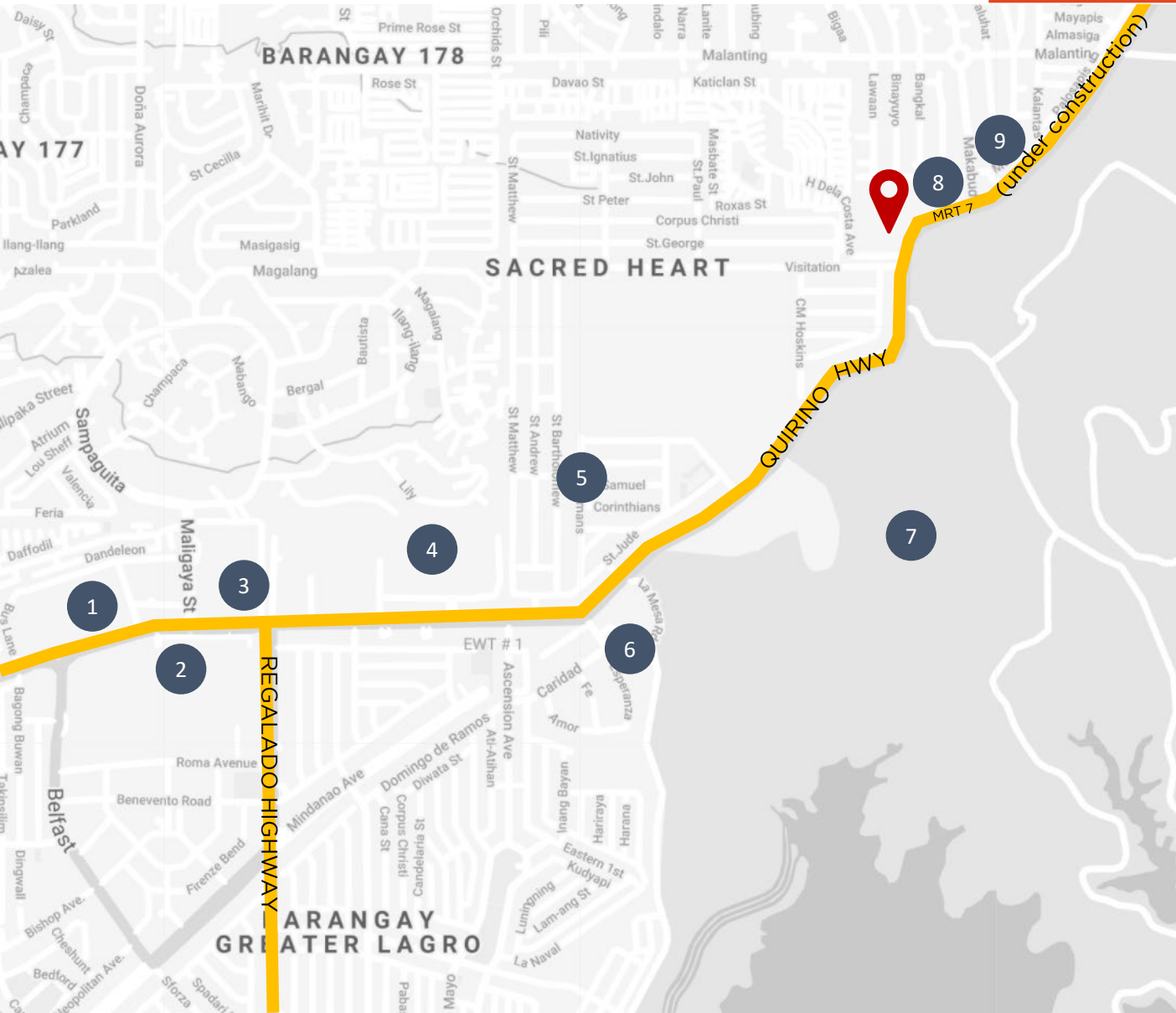




LA MESA ECO PARK
NATURE RESERVE

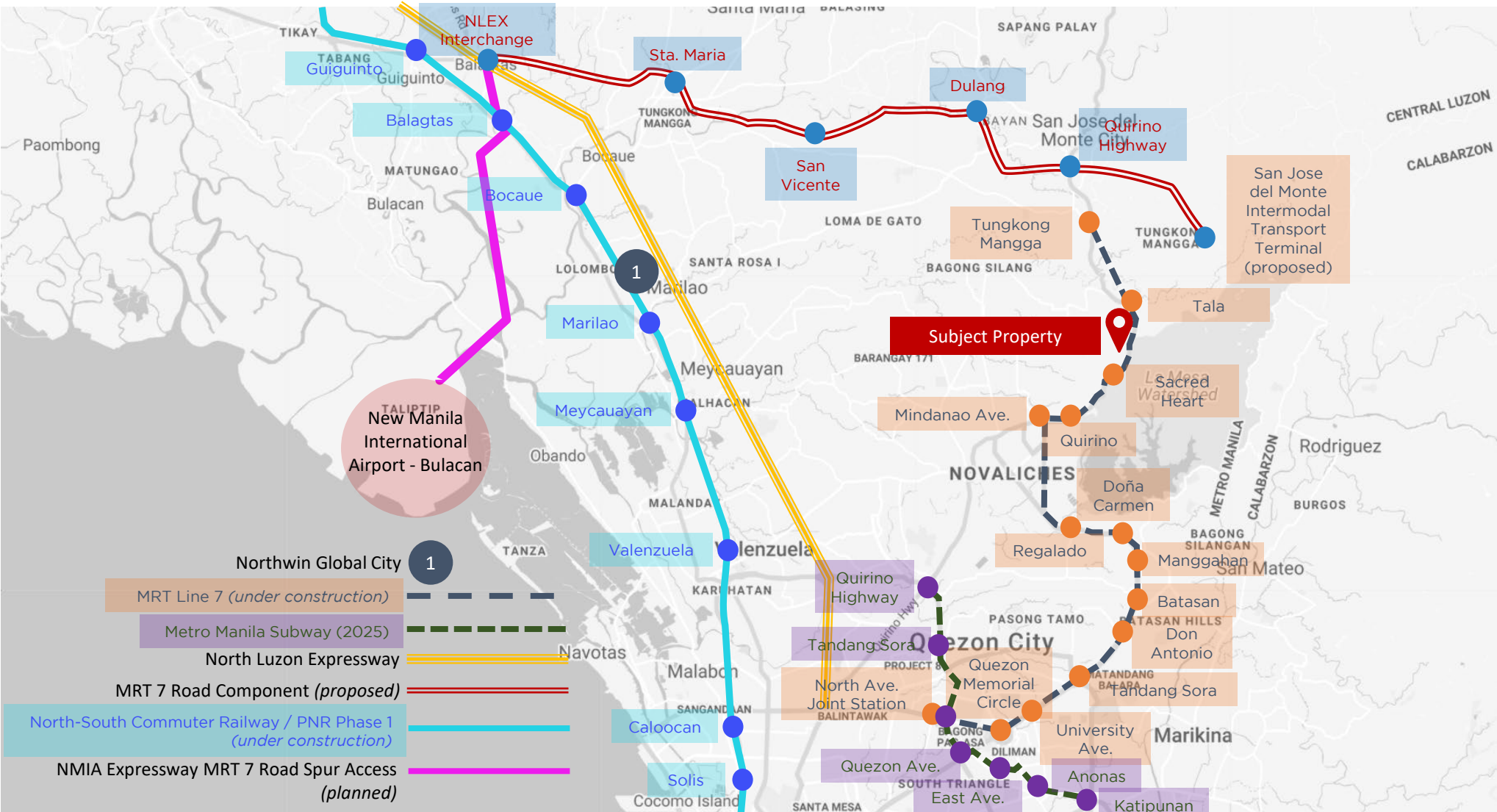
**Boundaries shown for identification purposes only*

[Click here for drone footage of the site and surrounding areas](#)



	Subject Property
1	Robinsons Novaliches
2	SM City Fairview
3	Ayala Malls Fairview Terraces
4	SMDC Trees Residences
5	Sacred Heart Village
6	Our Lady of Fatima University, QC
7	La Mesa Nature Reserve
8	Caloocan Police Station
9	St. Anthony School Novaliches

[Click here for Google Map location](#)



[Click here for
MRT 7 update as of May
2021](#)

[Click here for
MRT 7 trainset mounting as of
September 2021](#)



DAVID LEECHIU

+63 918 910 5158

David@Leechiu.com

REBL 9698, ID 19-2900918 until 04/20/2023

PTR 8535869 until 12/31/2021

HENRY CABRERA

+63 998 847 9176

Henry.Cabrera@Leechiu.com

REBL 10305, ID 18-916207 until 10/30/2021

PTR 8535859 until 12/31/21

ALVIN MAGAT

+63 917 538 1038

Alvin.Magat@Leechiu.com

REBL 29039, ID 18-1989144 until 7/18/2022

PTR 8535872 until 12/31/2021

TINA CORNEJO

+63 917 895 8462

Tina.Cornejo@Leechiu.com

REBL 7612, ID 19-3210255 until 11/29/2023

PTR 8535861 until 12/31/2021

The material and information contained herein are intended only as a guide in helping the recipient hereof to make a decision on whether or not to enter into the appropriate transaction with respect to the Property described herein. The recipient hereof is expected to conduct its own review and assessment of the Property and its suitability for the recipient's intended purpose, including consultation with financial and legal advisers and counsel, for a thorough understanding of all considerations which may be relevant to the recipient's decision to enter into a transaction with respect to the Property described herein. Nothing contained herein may be taken as a representation, warranty, or offer on the part of the Property owner or its representative upon which a binding agreement with respect to the Property may be based. No representation or warranty is made with respect to the accuracy, completeness, or relevance of the material and information contained herein, and Leechiu Property Consultants, Inc., its stockholders, directors, officers, employees, representatives, and agents assume no liability arising from or in relation to the use or reliance of or by any person on the material and information contained herein.

LEECHIU
PROPERTY CONSULTANTS

Our insights. Your success.